



www.TrimeUSA.com

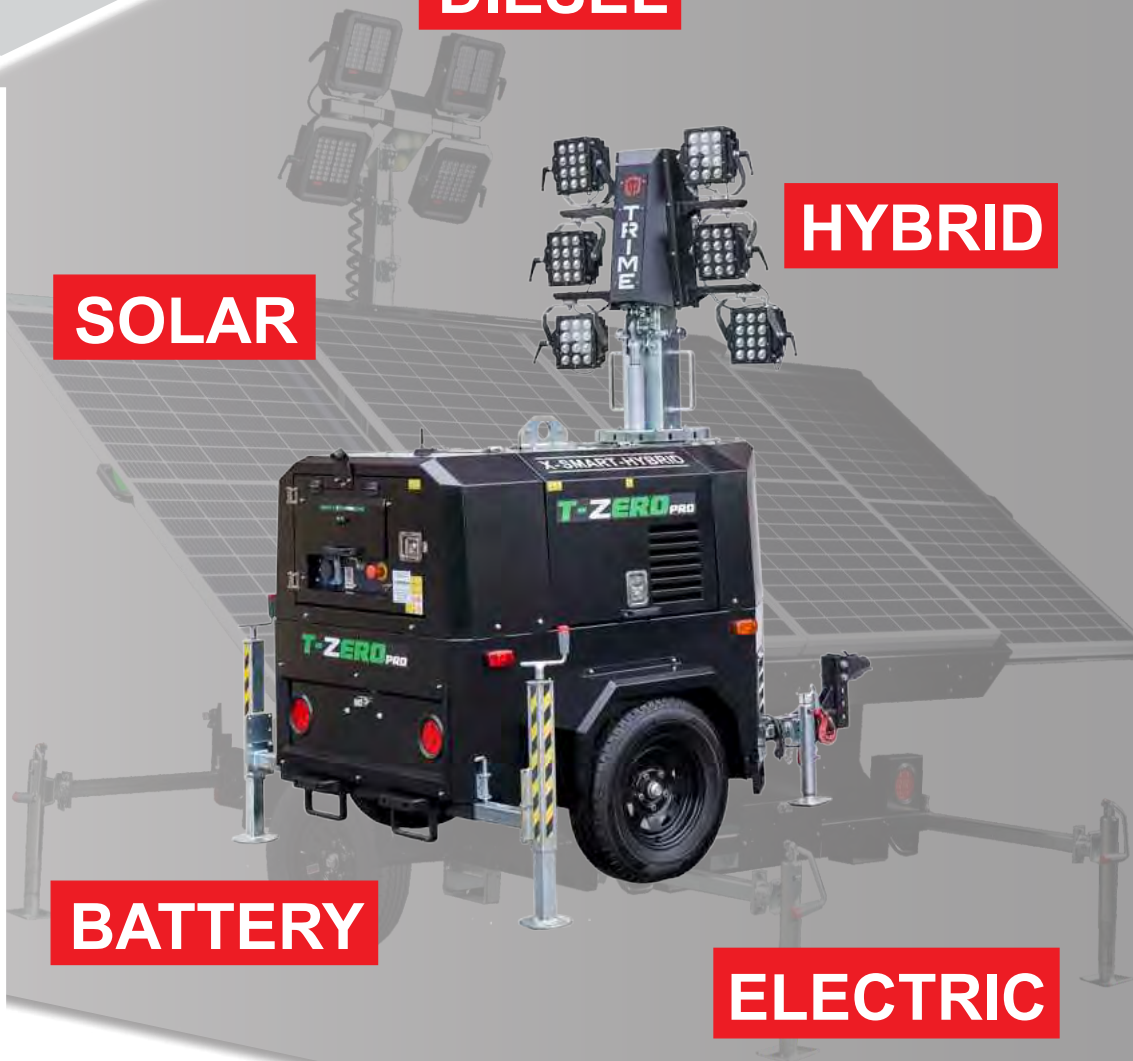
DIESEL

HYBRID

SOLAR

BATTERY

ELECTRIC



*Trime is committed to producing a range of unique machines that focus on power and efficiency resulting in sustainability and reduced carbon emissions as a part of our **GOAL 20/25**.*

(877) 978-7463 / www.TrimeUSA.com



Trime - Italy



Trime - USA

The Trime Group is a global manufacturer focused on the design and production of high quality, industry leading construction equipment products that are designed from the user's perspective. Our roots are in light towers and power generation equipment, but have grown with additional strategic products over the years. The origins of our company stem back over 50 years and our ownership is private. Trime is a vertical integrated company including design, metalwork, powder coating, mechanical and electrical assembly and final testing with everything completed in our many state-of-the-art factories located in Northern Italy.

As a company, we are committed to designing and producing products that focus on power and efficiency resulting in sustainability and reduced carbon emissions. Our commitment by the end of 2025 is to design and offer a range of machines, unique to our industry, that will greatly reduce and eliminate the need for fossil fuels. We are a proven leader in clean energy products. We use solar ourselves, reducing Co2 emissions daily at our factories.

Our products are geared to be used in all markets including rental, construction sites, entertainment, road work, special events, oil, gas, mining, civil protection and military use. Today our product range includes:

- Light Towers (Diesel, Solar, Hybrid, Battery and Electric)
- Power Generators (Diesel, Hybrid, Solar, Battery)
- Security Towers
- Water Recycling Wash Bays
- Dust Suppression Systems
- DeWatering Pumps
- Jobsite Fuel Tanks

Trime is constantly innovating and bringing new products to market daily. We also look at strategic acquisitions of manufacturing firms that enhance and complement our current product line up. Our global distribution network includes company owned offices in North America, Great Britain, The Netherlands, Australia and our corporate headquarters in Italy with over 500



X-SMART (EL1250H)

LED LIGHT TOWER

Diesel Powered

Carbon Footprint - 82% LESS
Annual Fuel Cost - 61% LESS
Total Operating Cost - 63% LESS
Compared to a Metal Halide



- Full run time 288 hrs - that's almost a full month of darkness on one tank of diesel! Refuel once a month verses five times a month with metal halide towers. Save on fuel and labor refueling costs!
- 4 x 320W high efficiency LED light heads have a 5 year warranty and are easily tilted & rotated by hand covering a 53,820 sq ft area.
- Kubota Z482-E4B engine with 1,000 hour service interval
- Hydraulically operated vertical mast fully raises in 10 sec. with the push of a button with 26' maximum height.
- Set the timer and go! No need to send labor to start every night - 16 event 7 day digital timer, and automatic dusk to dawn operation. Save time and money!
- Built for a long life! Rugged 10 gauge steel enclosure and fenders are galvanized and powder coated inside and out. Documented towers with 30,000+ hours.
- 110% containment base

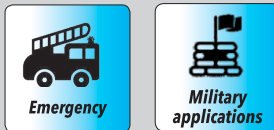
See next page for specs & options.

Trime X-SMART (EL1250H) Specifications

Mast, Dimensions & Weight	
Mast Height	26'
Wind Rating	50 mph
Fully Retractable Stabilizers	Y
Axle	Torsion
Drawbar	Tubular Steel
Unit Dimensions - Stowed	63" x 56" x 95"
Operating Dimensions	98" x 100" x 315"
Dry Weight	2107
Operating Weight	2429
Engine	
Make	Kubota* Kohler*
Model	Z482-E4B KDW702
Emission Regulation	Tier 4
Type	Vertical 4 Cycle Liquid Cooling Diesel
Cylinder	2
Displacement / L (cu. In.)	0.479 (29.23)
Combustion System	IDI
Intake System	Naturally Aspirated
Maximum Speed	1800 rpm
Sound Level @ 23'	65 dBA
Alternator	
Make	Linz
Output	4.2 kVA
Hz	60
Fuel	
Type	Diesel
Fuel Capacity	46 gal.
Run Time	288 Hrs

*Specs subject to change. Ask about engine.

Applications

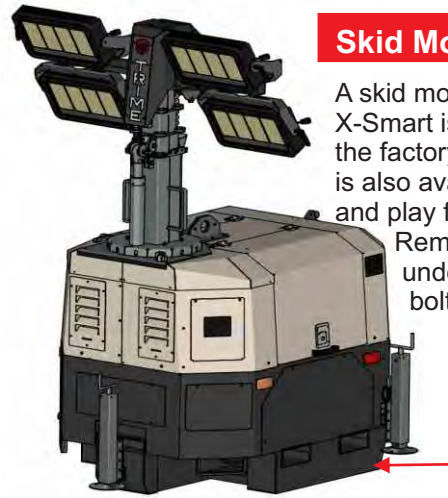


Illuminated area = 53,820 sq ft



OPTIONS

Skid Mount



A skid mount version of the X-Smart is available from the factory. The skid itself is also available as a plug and play for existing towers. Remove existing undercarriage and bolt on skid.

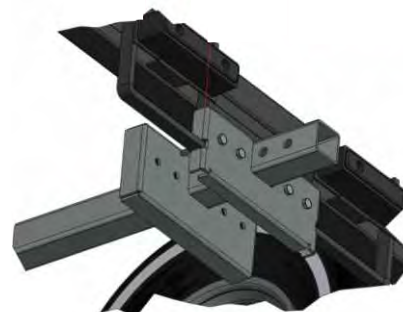
Anti-Glare Light Heads

Anti-glare light heads are available as an option in place of the standard 320W light head. There is a 10% less square footage difference with the anti-glare heads, but more economical than other options out there.



Receiver Hitch

The receiver hitch gives user the ability to tow two towers together safely, one hooked to the back of the other. It bolts into the existing frame and axle.





- 6 x 320W high efficiency LED light heads have a 5 year warranty and are easily tilted & rotated by hand illuminating a 58,125 sq ft area.
- Powered by a Kubota engine with 85W alternator allows users to run small tools - 22-24 amps.
- Hydraulically operated vertical mast fully raises in 10 sec. with the push of a button with 28' maximum height.
- Set the timer and go! No need to send labor to start every night - 16 event 7 day digital timer, and automatic dusk to dawn operation. Save time and money!
- Built for a long life! Rugged 10 gauge steel enclosure and fenders are galvanized and powder coated inside and out.
- 110% containment base

See next page for specs.

Trime X-RENT Specifications

Mast, Dimensions & Weight	
Mast Height	28'
Wind Rating	50 mph
Fully Retractable Stabilizers	Y
Axle	Torsion
Drawbar	Tubular Steel
Unit Dimensions - Stowed	101" x 54" x 98"
Operating Dimensions	101" x 100" x 335"
Dry Weight	2425
Operating Weight	2635
Engine	
Make	Kubota
Model	D1105
Emission Regulation	Tier 4
Type	Vertical 4 Cycle Liquid Cooling Diesel
Cylinder	3
Displacement / L (cu. In.)	1.123 (68.53)
Combustion System	IDI
Intake System	Naturally Aspirated
Maximum Speed	1800 rpm
Sound Level @ 23'	68 dBA
Alternator	
Make	Linz
Output	8.5 kW
Hz	60
Fuel	
Type	Diesel
Fuel Capacity	30 gal.
Run Time	71 Hrs

*Specs subject to change

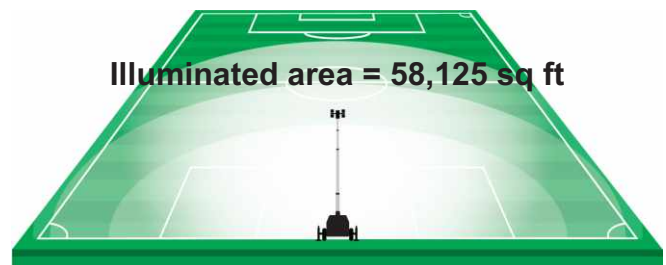


Applications



6 high efficiency LED heads that can be adjusted by hand & have a 5-year warranty

Illuminated area = 58,125 sq ft



X-SMART LITHIUM HYBRID LED LIGHT TOWER

Hybrid

Carbon Footprint - 98% LESS
Annual Fuel Cost - 90% LESS
Total Operating Cost - 93% LESS
Compared to a Metal Halide

- 97% reduction in carbon output with annual fuel savings of 99%
- 1,000 hour run time on one tank of fuel. Refuel only 3.5 times a year
- ComAp controller with advanced telematics included for 5 years
- 6 x 100W high efficiency LED light heads have a 5 year warranty and are easily tilted & rotated by hand illuminating a 33,330 sq ft area
- Kubota Z482-E4B engine with 1,000 hour service interval
- Built for a long life! Rugged 10 gauge steel enclosure and fenders are galvanized and powder coated inside and out.
- 110% containment base



See next page for specs.

Trime X-SMART LITHIUM HYBRID Specifications

Mast, Dimensions & Weight	
Mast Height	26'
Wind Rating	50 mph
Fully Retractable Stabilizers	Y
Axle	Torsion
Drawbar	Tubular Steel
Unit Dimensions - Stowed	63" x 56" x 95"
Operating Dimensions	98" x 100" x 315"
Dry Weight	2081
Operating Weight	2521
Engine	
Make	Kubota
Model	Z482-E4B
Emission Regulation	Tier 4
Type	Vertical 4 Cycle Liquid Cooling Diesel
Cylinder	2
Displacement / L (cu. In.)	0.479 (29.23)
Combustion System	IDI
Intake System	Naturally Aspirated
Maximum Speed	1800 rpm
Sound Level @ 23'	65 dBA
Alternator	
Make	Linz
Output	4.2 kVA
Hz	60
Fuel / Power	
Type	Battery / Diesel
Fuel Capacity	62 gal
Full Run Time	1,000 hrs
Fuel Consumption	.23 gal/hr
Battery Pack	
Type	Lithium 200Ah
Hybrid Mode Cycle	
Battery Run Time	12 hrs
Recharging Time	5 hrs
Complete Charge Cycle	16 hrs

*Specs subject to change

If operating 10 hours per night, tower will run 100 days straight

- ▶ Run time battery - 750 hours
- ▶ Run time engine - 250 hours
- ▶ Refill only 3.5 times a year

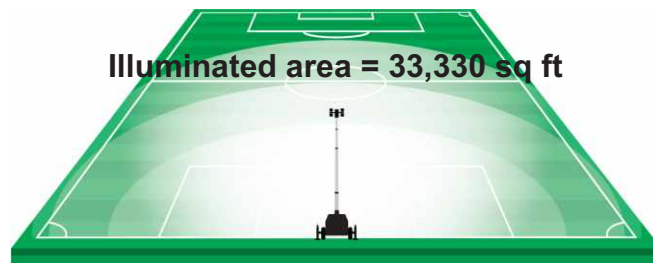


ComAp controller with 16 event 7 day timer and automatic dusk to dawn

Applications



Illuminated area = 33,330 sq ft



X-BRIGHT

LED LIGHT TOWER

Electric



- No fuel, no maintenance...just plug in & go to work. Can be used inside or out with any electrical source, land power, etc.
- Compact enough to roll through a standard 80" doorway and can be transported in the back of a pickup truck.
- 4 x 320W high efficiency LED light heads have a 5 year warranty and are easily tilted & rotated by hand illuminating a 49,520 sq ft area
- Telescopic vertical galvanized mast
- Built for a long life! Rugged 10 gauge steel enclosure and fenders are galvanized and powder coated inside and out.
- Fork pockets and lifting bail for transporting with extendable handles for positioning on jobsites.

See next page for options & specs.

Trime X-Bright (E1200) Specifications

Mast, Dimensions & Weight	
Mast Height	16'
Wind Rating	50 mph
IP Level	65
Fully Retractable Stabilizers	Y
Unit Dimensions - Stowed	44" x 31" x 78"
Operating Dimensions	80" x 55" x 192"
Dry Weight	580
Operating Weight	580
Control Panel	15/20A input selector 120V 15A input 120V 20A input 120V 20A output

*Specs subject to change

Applications



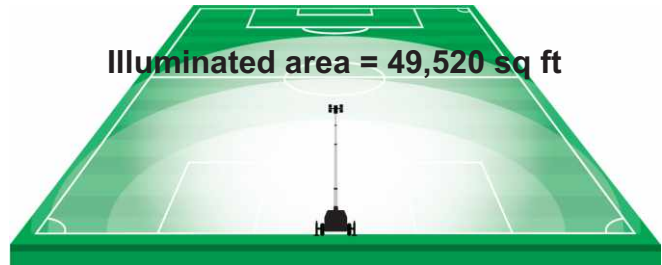
Options

Towable Trailer

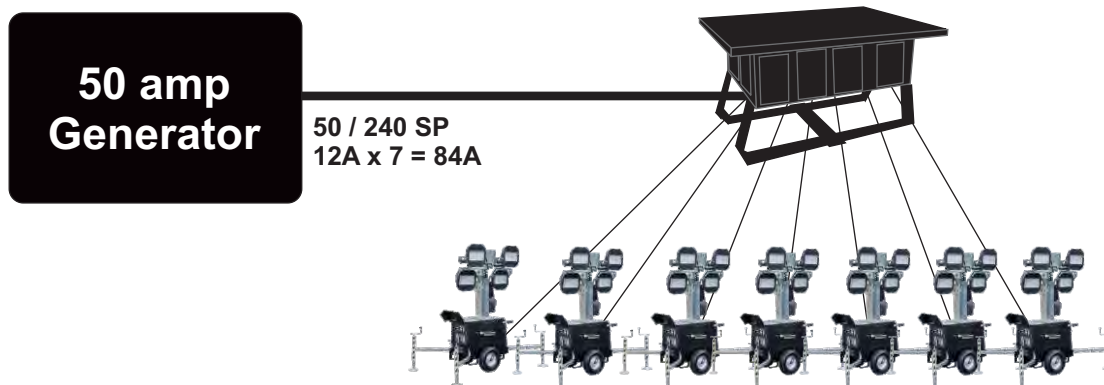
This towable trailer is available as an option when purchasing an X-Bright or as a plug and play for existing towers. Generator not included.



Illuminated area = 49,520 sq ft



The X-Bright (E1200) electric light tower with 4 x 320 light heads is not chainable when chaining two together, however can be used with a generator and spider box. See diagram below:



Each tower uses 12A, 7 towers cover over 7 acres

X-CHAIN ATEX

LED LIGHT TOWER

Electric

Explosion Proof Light Heads



- No fuel, no maintenance...just plug in & go to work. Can be used inside or out with any electrical source, land power, etc.
- 4 x 88W high efficiency LED explosion proof light heads have a 5 year warranty and are easily tilted & rotated by hand illuminating a 25,833 sq ft area
- Telescopic vertical galvanized mast
- Built for a long life! Rugged 10 gauge steel enclosure and fenders are galvanized and powder coated inside and out.
- Fork pockets and lifting bail for transporting with extendable handles for positioning on jobsites.

See next page for specs.

Trime X-Chain Atex Specifications

Mast, Dimensions & Weight	
Mast Height	23'
Wind Rating	50 mph
IP Level	66
Unit Dimensions - Stowed	47" x 34" x 83"
Operating Dimensions	73" x 57" x 276"
Dry Weight	728
Operating Weight	728
Control Panel	15/20A input selector 120V 15A input 120V 20A input 120V 20A output

*Specs subject to change

Applications



4 high efficiency LED explosion proof heads can be adjusted by hand



Illuminated area = 25,833 sq ft



ZERO
fuel costs



ZERO
noise



ZERO
emissions



MINIMAL
service



X-PRO SOLAR

LED LIGHT TOWER

Solar

- 25' maximum height
- 4 x 90W high efficiency LED light heads have a 5 year warranty and are easily tilted & rotated by hand illuminating a 35,520 sq ft area.
- Four 340W solar panels with electric positioning. Up to 360 days solar self sufficient based on area of use and sunlight available.
- 4 position light intensity switch and light hour meter.
- Automatic light management to help with battery charging along with battery charge monitor.
- External power source signal lamp and light sensor relay
- Built for a long life! Rugged 10 gauge steel enclosure and fenders are galvanized and powder coated inside and out.
- 4 stabilizers and on board levels
- Towable with DOT light package

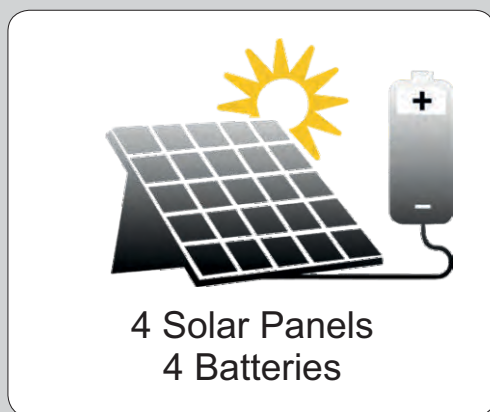


See next page for specs.

Trime X-PRO SOLAR Specifications

Mast, Dimensions & Weight	
Mast Height	25'
Lifting Method	Manual Crank
Mast Rotation	340°
Unit Dimensions - Stowed	134" x 75" x 100"
Operating Dimensions	151" x 105" x 295"
Dry Weight	2756 lbs
Operating Weight	2756 lbs
Floodlights	
Type	LED
Power (each)	90W
Floodlight Quantity	4
IP Level	65
Illuminated Area	35,520 sq ft
Batteries	
Type	AGM
Battery Quantity	4
Power Pack	24 V 410 AH
Solar Panels	
Model	Monocrystal Silicon
Panel Quantity	3
Wattage (each)	340W
Solar Deployment	Electric 26° max inclination
Charge Control	MPPT

*Specs subject to change



Setting Up Your Jobsite For Success

1. Determine the area that needs to be lit and the scope of lighting needed.
2. Position your solar tower appropriately spaced throughout the work or play area.
3. Position your tower so that the solar panels face 180° south (obtaining the max potential for sunlight collection.)
4. Deploy outriggers on a solid/stable surface and level the tower.
5. Adjust/position each of the 4 light heads.
6. Raise and position your mast.
7. Extend stored solar panel(s) from the transport position to the working position.
8. Determine the available sunlight profile for the geography where you are working and set the light dimmer for the area – you can dim the lights from 100% (160W) down to 25% (40W) impacting your coverage area.
9. Arrange for the daily monitoring of the battery storage level. It is critical that the battery level does not fall to <20% charge. This monitoring can be done by checking the machine and reading the BVM (Battery Voltage Meter.) (NOTE: We recommend telematics on all units to monitor and manage the unit.)
10. Allow for an external (120V) power source to plug in the tower for auxiliary recharging via ground power or generator when the unit approaches 20% charge. (Usually when there are periods of low sunlight or inclement weather.)
11. Regularly monitor the cleanliness of the solar collection panels. Keep them clean and make sure they are not damaged.
12. Adjust light output setting based on actual job site battery consumption and experience.

X-POLE SOLAR

LED LIGHT TOWER

Solar



- 18' maximum height
- High efficiency 130W LED solar panel
- PIR motion sensor standard. Dims when no one is around to improve power efficiency
- 4,603 sq ft of illuminated area
- On-board controller regulates power output
- 5 section manual vertical tower
- Lithium ion battery pack
- 40 units per 53' trailer
- Zero Co2 emission, zero noise level, and zero fuel consumption

See next page for specs.

Trime X-Pole Solar Specifications

Mast, Dimensions & Weight	
Mast Height	18'
Wind Rating	50 mph
Unit Dimensions - Stowed	59" x 24" x 93"
Operating Dimensions	59" x 24" x 216"
Dry Weight	882 lbs
Operating Weight	882 lbs
Floodlights	
Type	LED
Power	50W
IP Level	65
Solar Panel	
Power	130W
Min Working Full Bright	11.5 hrs
Min Working Dim Mode	46 hrs
Batteries	
Type	Lithium
Number	1
Power Battery Pack	656W
Expected Battery Cycle	2000

*Specs subject to change

Applications



Illuminated area = 4,603 sq ft



X-BATTERY

LED LIGHT TOWER

Battery



- 23' maximum height
- 4 x 100W high efficiency LED light heads have a 5 year warranty and are easily tilted & rotated by hand illuminating a 21,528 sq ft area.
- Dusk to dawn & 8 event 7 day digital timer
- Main generator selector switch
- 4 - 10A 1 pole circuit breaker/each head
- 1 - 15A-120V inlet to power lights with ground power
- 24V DC batteries - AGM - 400AH each
- 120V-40A battery charger built-in

See next page for specs.

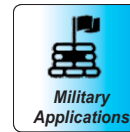
Trime X-Battery Specifications

Mast, Dimensions & Weight	
Mast Height	23'
Unit Dimensions - Stowed	47" x 47" x 91"
Operating Dimensions	98" x 98" x 276"
Operating Weight	1587 lbs
Battery	
Make/Model	Trime AGM
Volt	6 each
Quantity/Power	4 / 49 AH each
Run Time	36 hrs
Recharging Time	12 hrs
120V-60Hz built in battery charger	40A-120V

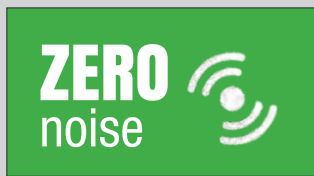
*Specs subject to change



Applications



4 high efficiency LED heads that can be adjusted by hand & have a 5-year warranty














Fuel Storage

Transportable Fuel Tanks



DOT APPROVED

-  Can be transported full of diesel
-  Stack 2 tanks full of fuel for improved storage
-  Lockable lid to protect contents
-  Fork pockets & lifting eyes for easy maneuverability
-  Galvanized steel and powder coated inside and out
-  Can feed 2 machines at the same time
-  12 volt transfer pump with filter, hose and meter standard
-  Double-walled, 110% containment
-  Solar/Battery option available for the pump

Diesel transfer pump setup



MODEL	G-1000	G-2000	G-3000
Dry Weight (lbs)	1,291	1,967	
Length (in)	57	100	
Width (in)	45	45	
Height (in)	50	50	
Capacity (gal)	250	500	750
Fuel Containment	110%	110%	110%

SPECS COMING SOON

CONTROL 360°

Telematics



Monitor your equipment remotely



Cost savings in maintenance and inventory



Automated report and data management

Control 360° is fully customizable, controllable and monitorable

Set timer to turn your tower on/off remotely.

Choose which lights to turn on/off.

Check your machine's parameters

TRIME UI Dashboard Units Analyse Management Device: X-Smart Litio TEST

Light sensor
Mode Auto Light Sensor 0
Light Sen... 88
Light Level Lamps ON 20 %
Light Level Lamps OFF 30 %

Timer
Mode Auto Timer 0
Timer 1 Setup Off
Timer 2 Setup Off

Lamps
Lighting Hours Counter 478.5 h
Manual commands Status
Lamp 1 On/Off
Lamp 2 On/Off
Lamp 3 On/Off

Engine
Running Hours 117.3 h
Oil Pressure ###
Coolant Temp ###

Generator
Generator Voltage L1-N 0 V
Generator Frequency 0 Hz
Load Current L1 0 A

Mains
Mains Voltage L1-N 0 V
Mains Frequency 0 Hz
Load Current L1 0 A

Hybrid system battery
V-Battery 28.9 V
T-Battery 37 °F
I-Battery 0 A
Power Enable
SOC 90

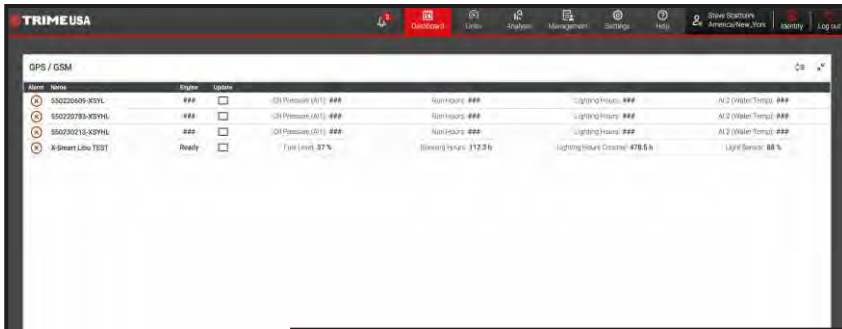
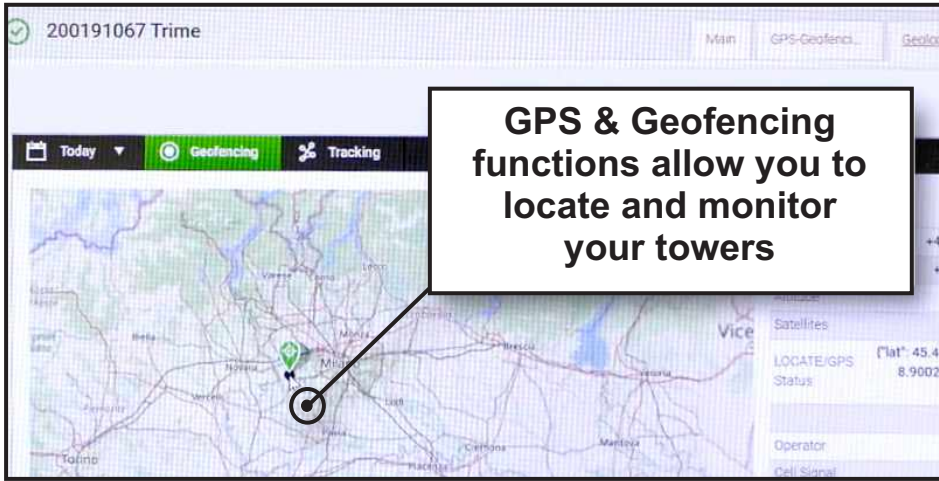
Unit Information
Gen-Set Name X-SMART HYBRID

Statistics
Maintenance Timer 1 RunHours 10000 h
Maintenance Timer 2 RunHours 10000 h
Maintenance Timer 3 RunHours 10000 h
Maintenance Timer 1 RunH... 10000 h
Maintenance Timer 2 RunH... 10000 h
Maintenance Timer 3 RunH... 10000 h

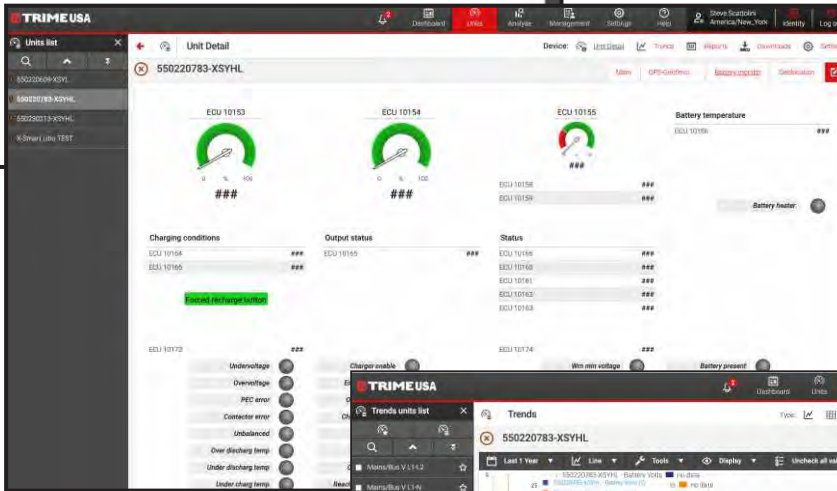
Alarm list 0 / 0 / 0 / 0

Last Update 2023-12-27 02:29:36

Engine state Ready
Breaker state MainsPt

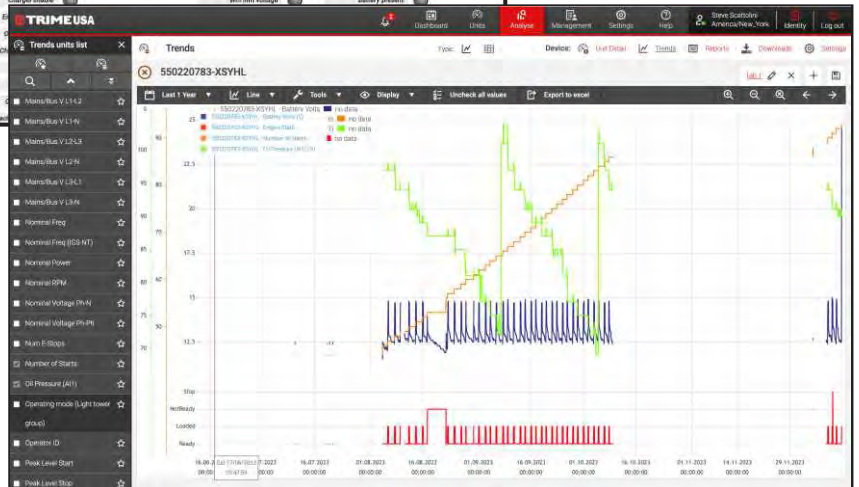


Monitor your whole fleet of towers



View each tower's details

View tower trends to keep unit running at top performance



Additional Equipment Offered By



Security Towers



Wash Bay Systems



Dust Suppression Systems

*Trime US Inc. stocks OEM parts and filters
for the equipment we manufacture.*

Parts

Ways to Order



Order online:

www.TrimeUSA.com

Trime US is also on SmartEquip

(Registration with SmartEquip Required)



Order by phone:

(877) 978-7463



Order through email:

parts@trimeusa.com



Trime US, Inc. - U.S. Headquarters for Trime S.R.L.
3 Killdeer Court, Suite 301
Swedesboro, NJ 08085
(877) 978-7463 / sales@trimeusa.com

Request A Quote

(877) 978-7463 or sales@trimeusa.com

Accounting

(877) 978-7463 or accounting@trimeusa.com

www.TrimeUSA.com

- Product Info
- Spec Sheets
- Warranty Info
- Parts Ordering
- Product Photos and Videos



Trime Italy
www.Trime.it



Trime UK
www.TrimeUK.com



Trime North
www.Trime-North.nl



Trime Asia
www.TrimeAsiaPacific.com

 Light Towers  Power Division  Dust Suppression
 Water Treatments  Fuel Tanks